



Lessons learned about climate change

– seen from a Greenlandic perspective



Who is she



Nature is complex

An interaction between a web of elements



Bridging science and knowledge

- Marine geology and biology
- Oceanography
- Glaciology
- Archaeology
- Traditional knowledge
- Cultural Landscapes
- Archives



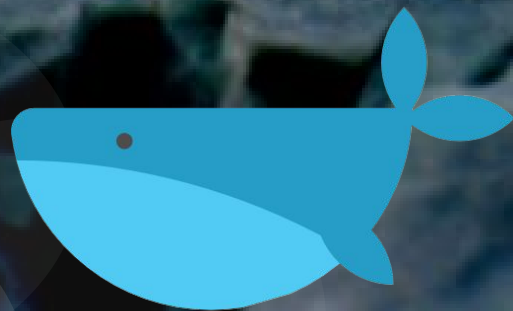
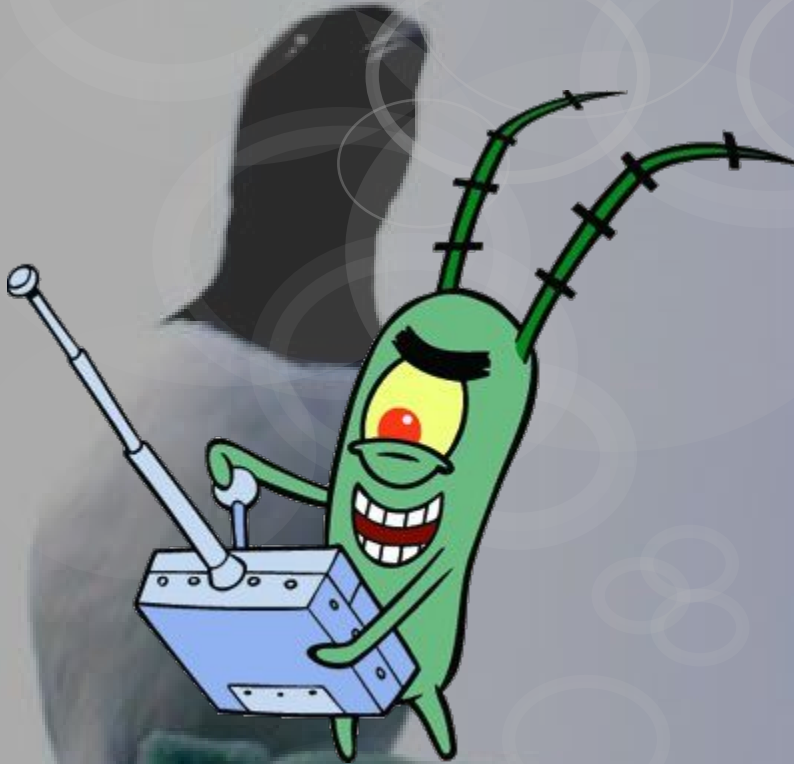
Greenland



How are the environments changing?



How are changing environments effecting ecosystems?



Why is fishery important?



Brings economic values but also social values supporting a web of cultural practices.

What happens when the ice melts
-qimmeq, the greenlandic sledge dog



What happens when the ice melts
-contaminants and sound pollution



What happens when the ice melts

- food security



What is the biggest threat climate change or globalization?



Changes in perceptions and values...



How can we engage
and learn from each other



Freezing
Distribution
Break-up
Sound
Thickness
Texture
Ice patterns

ICE

Way of calving

Retreat
Under water plume
Thicknes
Variations
Advance
Melt off
Ice distribution
Size of calving ice

GLACIERS

Stress factors
Migration
Foodweb interactions
Resource availability
Behavior

Animals

Distribution

Disturbances

Bottom topography



Currents
Color
Sea level
Taste
How seals float

...meet the diverse range of perceptions and values...



Thank you!

